



# GRAPHICS DESIGNING

# 06

# CorelDraw



## INTRODUCTION

CorelDRAW is not just a software; it's a creative powerhouse that empowers designers, artists, and professionals worldwide. With its intuitive interface and extensive features, CorelDRAW has become the go-to solution for graphic design, illustration, and page layout. Whether you're a seasoned professional or just starting your creative journey, CorelDRAW offers unmatched versatility and precision to bring your ideas to life. From designing logos and marketing materials to intricate illustrations and web graphics, CorelDRAW provides the tools you need to unleash your creativity and achieve exceptional results. Join millions of users who rely on CorelDRAW to express their vision with clarity and impact.



# Installing CorelDRAW Graphics Suite

This section contains the following topics:

- "System requirements"
- "Preparing for installation"
- "Installing CorelDRAW Graphics Suite applications"
- "Installation options"
- "Modifying and repairing installations"
- "Uninstalling CorelDRAW Graphics Suite"
- "Frequently Asked Questions"

## • **System requirements**

The following list includes the minimum system requirements. Note that for optimum performance, you need more RAM and hard disc space than indicated in the list.

- Operating system with latest service pack: Windows 8 (32-bit or 64-bit Editions) or Windows 7 (32-bit or 64-bit Editions)
- Intel Core 2 Duo or AMD Athlon 64
- 2 GB RAM
- 1 GB hard disk space

Electronic software downloads (ESD) require more space to allow for the download, the uncompressed setup files, and the actual installation, which includes copying the source files as well.

- Mouse or tablet
- 1280 x 768 screen resolution or greater
- DVD drive
- Microsoft Internet Explorer 8 or later

## • Preparing for installation

- Make sure that your system's date and time are set correctly.
- Close all applications, including all virus detection programs and applications that are open in the system tray or on the Windows taskbar. Not doing so may increase the installation time and interfere with the installation.



- Log in as an administrator.
- Make sure that you have enough free disk space available on the drive where you want to install the application.
- Delete the contents of the system's TEMP folders to avoid file and memory conflicts. To navigate to the Temp folders, type %temp% in the Search box on the Windows 7 Start menu or the Windows 8 desktop.
- Install CorelDRAW® GraphicsSuite X7 in its own directory to avoid conflicts with previous versions.



## • **Installing CorelDRAW GraphicsSuite applications**

The installation wizard makes it easy to install CorelDRAW Graphics Suite applications and components. You can choose a typical installation to quickly install the suite, or you can customize the installation by choosing different options.

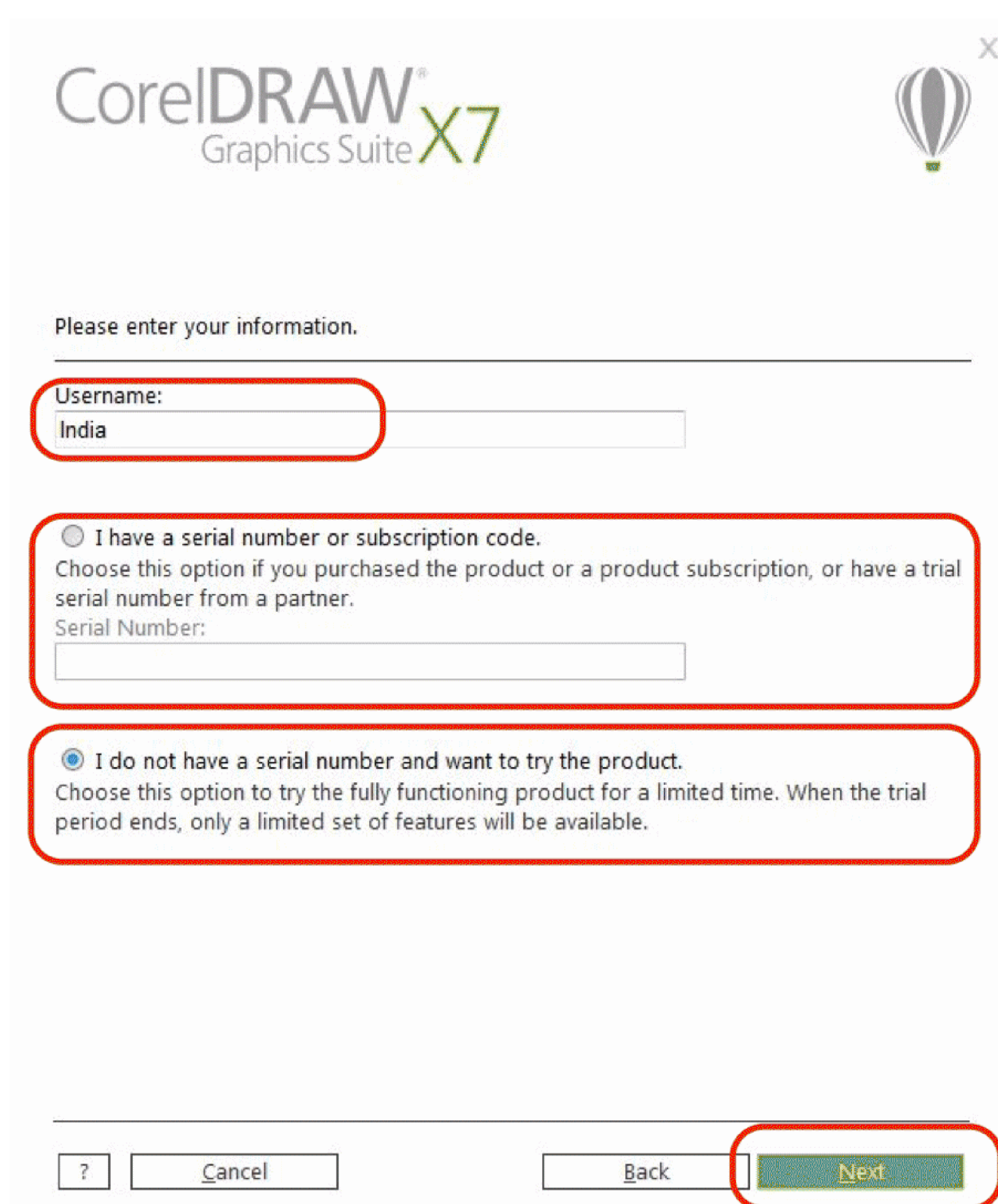
To install CorelDRAW GraphicsSuite applications

- Close all applications, including all virus detection programs.
- Insert the DVD in the DVD drive.
- (Windows 7 and Windows 8) If the installation wizard does not start automatically, browse to the root of the DVD, you must locate setup.exe on the DVD, and double-click the file. Be sure to navigate to the folder that corresponds to the version of your operating system: 64-Bit or 32-Bit.
- Scroll down to read the license agreement, and then click I accept.
- Click Next.
- Type your name in the User name text box.
- Type your serial number in the Serial number text box.
- The serial number is not case-sensitive, and the dashes are optional.
- Click Next.
- Follow the instructions for installing the software.

- **Installation options**

You can choose between two types of installations:

- Typical installation – automatically installs the main programs and utilities of the suite to a default location in the Program Files folder. If later you need a component that is not installed, you can modify your installation.



The image shows the 'Please enter your information.' screen of the CorelDRAW X7 Graphics Suite installer. The window has a title bar with a close button (X). The CorelDRAW X7 logo is at the top left, and a hot air balloon icon is at the top right. Below the title, the text 'Please enter your information.' is displayed. There are three main input sections, each highlighted with a red rounded rectangle. The first section is for the 'Username:' with the text 'India' entered. The second section is for users with a serial number or subscription code, featuring a radio button, a description, and a 'Serial Number:' input field. The third section is for trial users, featuring a selected radio button, a description, and a 'Next' button highlighted with a red rounded rectangle. At the bottom, there are buttons for '?', 'Cancel', 'Back', and 'Next' (highlighted with a red rounded rectangle).

CorelDRAW<sup>®</sup>  
Graphics Suite X7

Please enter your information.

Username:  
India

☐ I have a serial number or subscription code.  
Choose this option if you purchased the product or a product subscription, or have a trial serial number from a partner.  
Serial Number:

☒ I do not have a serial number and want to try the product.  
Choose this option to try the fully functioning product for a limited time. When the trial period ends, only a limited set of features will be available.

? Cancel Back Next

- Custom installation – lets you choose additional features, exclude components that you don't need, and specify where to install the suite. For example, you can install desktop shortcuts or install Ghostscript for better handling of imported EPS and PDF files.



- **Modifying and repairing installations**

You can also use the installation wizard to do the following:

- Modify the current installation by adding or deleting components
- Repair the current installation by fixing errors such as missing or corrupt files as well as inaccurate shortcuts and registry entries
- Repairing an installation is helpful when you encounter problems in using the application, or when you suspect that the installation is corrupt. Before repairing an installation, try resetting the current workspace to the default settings by holding down F8 while starting the application. Note that when you reset the workspace, all workspace preferences are reset.

To modify or repair a CorelDRAW Graphics Suite X7 installation

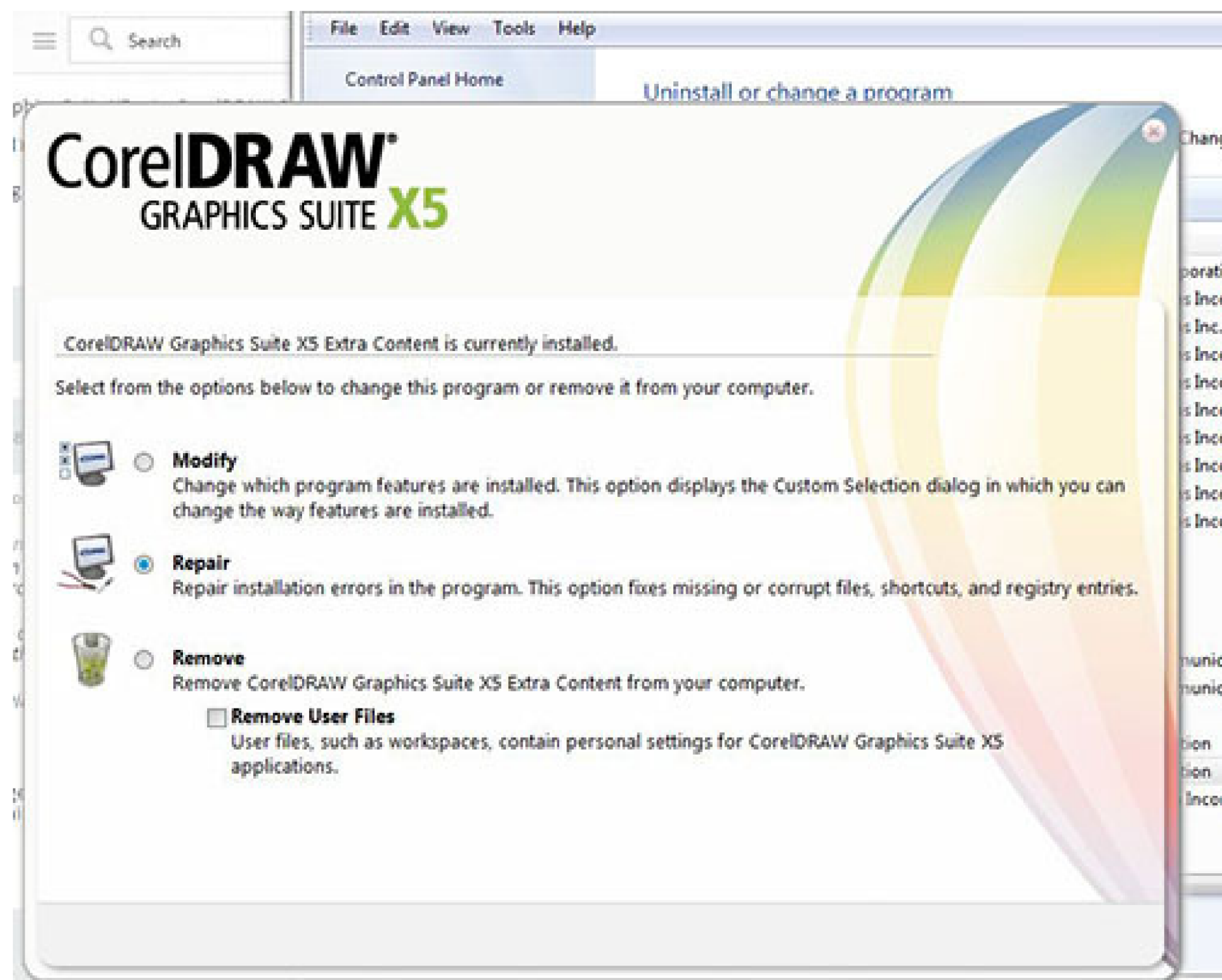
- Close all applications.
- On the Windows Control Panel, click Uninstall a program.
- Double-click CorelDRAW Graphics Suite on the Uninstall or change a program page.
- Enable the Modify option or the Repair option in the wizard that appears, and follow the instructions.

- **Uninstalling CorelDRAW Graphics Suite**

You can uninstall CorelDRAW Graphics Suite from the Control Panel.

To uninstall CorelDRAW Graphics Suite

- On the Windows Control Panel, click Uninstall a program.
- Double-click CorelDRAW Graphics Suite on the Uninstall or change a program page.



- Enable the Remove option in the wizard that appears, and follow the instructions.
- To completely uninstall the product by removing user files, such as presets, user-created fills, and customized files, enable the Remove user files check box.



- **Corel memberships and services**

## CorelDRAW memberships

- CorelDRAW memberships provide cloud-based access to product updates, digital content, new product features, and online services. Two membership options are available: Standard and Premium.
- CorelDRAW Standard Membership
- Included with your product purchase, this free membership provides access to:
  - Performance and stability updates
  - Online library of content such as clipart, photos, templates, and pattern fills
  - Extensive online selection of fonts

## CorelDRAW Premium Membership

- This paid membership lets you enrich your product experience with:
  - Exclusive online content such as clipart, photos, and pattern fills
  - Exclusive online selection of professional fonts
  - Early access to new features and services as they become available
  - Upgrades to the latest versions of CorelDRAW Graphics Suite

## Button state



## Indicates that...

You have not signed in.

You have signed in as a standard member.

You have signed in as a premium member.

## • Using your account

You can check your account settings from within CorelDRAW and Corel PHOTO-PAINT at any time, and you can download any utilities or applications provided with your membership from your Account page.

### To become a member

- Click Help ☒ About CorelDRAW memberships.
- Follow the instructions.
- If you don't have a corel.com account, you must create one first.

### To sign in

- Click Help ☒ Sign in.
- To check your corel.com account
- In CorelDRAW or Corel PHOTO-PAINT, click Help ☒ Account settings.



- **Updating Corel products**

During product installation, you can choose the option to download product updates and service packs. After installing the product, you can view information about product updates by clicking Help Updates.

By default, you are automatically notified when product updates and news become available.

In addition, with the default installation, the application automatically downloads new product updates and asks you for permission to install them. However, you can change the update settings at any time.

### **To change the update settings**

Click Help  Welcome screen.

Click Settings at the top of the Updates page.

In the Update settings window, enable or disable either of the following check boxes:

- Notify me of available product updates, news, and tutorials.
- Automatically download product updates and ask me before installing.

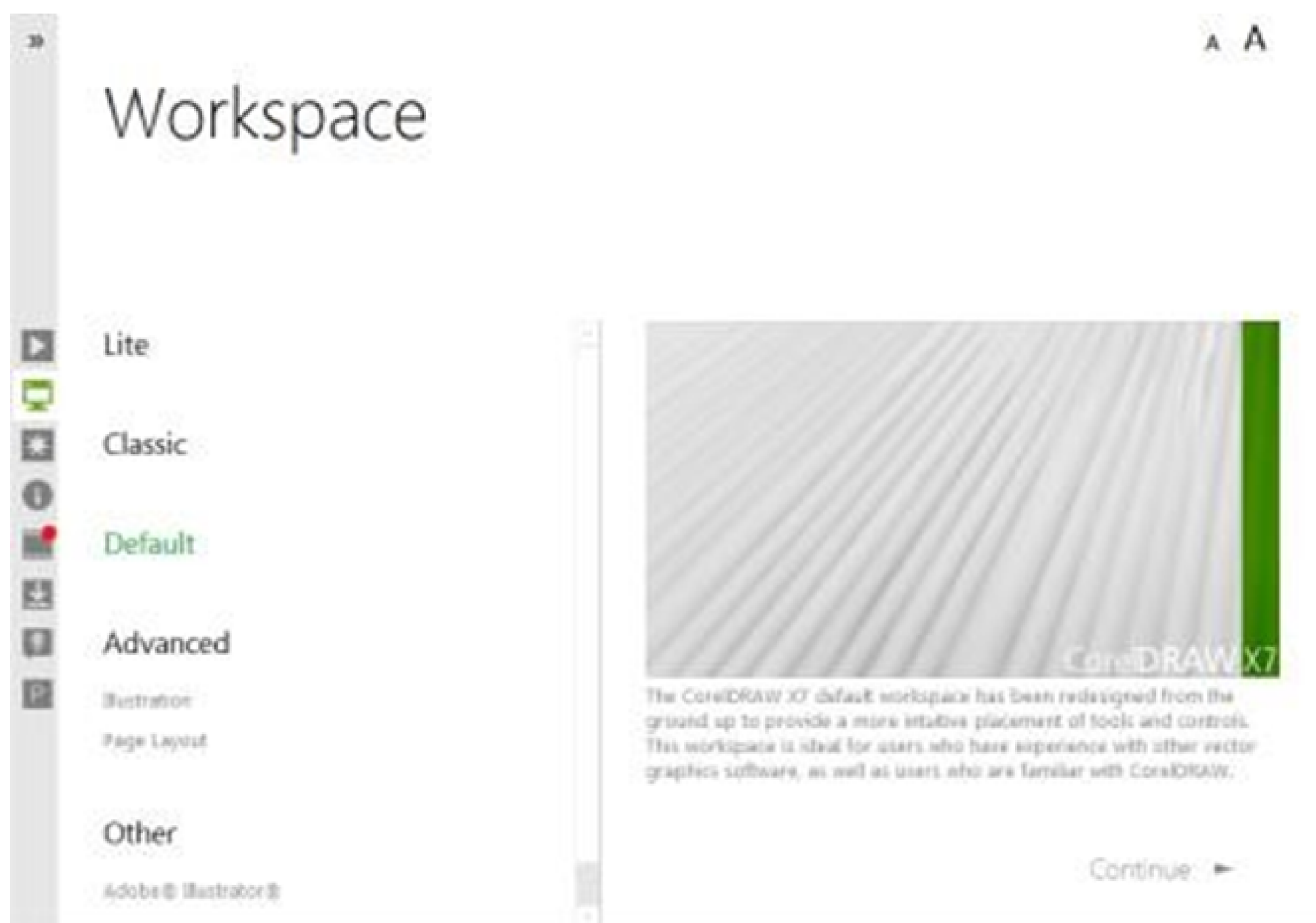
- **To change the update settings**

- Get up and running easily
- From a redesigned Welcome screen and workspaces that suit your needs to a wealth of content such as clipart and photos, CorelDRAW Graphics Suite X7 helps you to get started and become productive quickly.
- New! Welcome Screen navigation
- The Welcome Screen has been completely redesigned, making it easier to navigate and discover the abundance of available resources, including Workspace selection, What's New, a Gallery of inspiring user creations, application updates, Tips and Tricks, video tutorials, CorelDRAW.com, as well as Membership and Subscription information.
- New! Workspace selection
- The revamped Welcome Screen now includes a Workspace tab, which lets you choose from a variety of workspaces that were designed for different proficiency levels and specific tasks.



## • New! Workspaces

A variety of tailor-made, workflow-specific workspaces have been introduced to help new users get accustomed to the suite faster and easier. We've worked with professional industry experts who use the suite routinely to arrange tools and features for specific tasks, such as page layout and illustration.



## • New! Lite workspaces

Designed to help new users get acclimated to the suite more quickly, new Lite workspaces for both CorelDRAW X7 and Corel PHOTO-PAINT X7 provide exploration-friendly, scaled-down options in the toolboxes and property bars. The Lite workspaces were designed to make each application's most commonly used tools more readily accessible and easier to find.

- **New & Enhanced! Content**

CorelDRAW Graphics Suite X7 offers an extensive library of project-ready content designed to elevate your artwork. This suite features a diverse range of resources, including high-quality clipart, professional-grade templates, fonts, and images, allowing you to enhance your creative projects with ease.

- More than 13,000 high-quality clipartimages
- 2,000 photos
- More than 600 professionally designedtemplates
- More than 1,200 objects
- 75 interactive text frames
- 75 interactive PowerClip™ frames
- More than 100 image lists
- More than 400 Artistic Media
- 75 content-ready photo frames
- More than 1000 fonts
- More than 400 pattern fills

- **Work faster and more efficiently**

Become more efficient and productive by taking advantage of a wide array of new and enhanced features — from fills, transparencies, brush selection, and text enhancements to improved multiple document and automation workflows.

New & Enhanced! Fountain fills

You can now create elliptical and rectangular fountain fills, apply transparency to individual fill color nodes, repeat a fill within a filled object, adjust a fill's angle of rotation, and smooth the blend transition of a fountain fill.

With CorelDRAW X7, you can apply and adjust fountain fills more quickly, accurately, and creatively by using the new interactive controls in the Object properties docker. In Corel PHOTO-PAINT X7, the enhanced Edit fill dialog box provides quick access to all available controls for adjusting fountain fills.

- New! Edit Fill dialog box
- In both CorelDRAW X7 and Corel PHOTO-PAINT X7, the new Edit fill dialog box gives you more efficient access to all available controls for uniform, fountain, vector pattern, bitmap pattern, two-color pattern, texture, and PostScript fills. With CorelDRAW X7, the Edit fill dialog box also provides a real-time preview as you make adjustments.



## • **New & Enhanced! Custom fills**

Both CorelDRAW X7 and Corel PHOTO-PAINT X7 introduce new options that make it easy to save and share your custom fills. With CorelDRAW, the Save as new button appears in the Object properties docker and the Edit fill dialog box. The button also appears in the Edit fill dialog box in Corel PHOTO-PAINT. Plus, the new FILL format preserves and exposes all fill settings, making it quick and simple to modify both saved fills and fills downloaded from the ContentExchange.

## • **New! Fill picker**

With both CorelDRAW X7 and Corel PHOTO-PAINT X7, a new Fill picker makes searching, previewing, and selecting fills quick and easy. The Fill picker also provides access to both locally stored fills and those available in the Content Exchange.

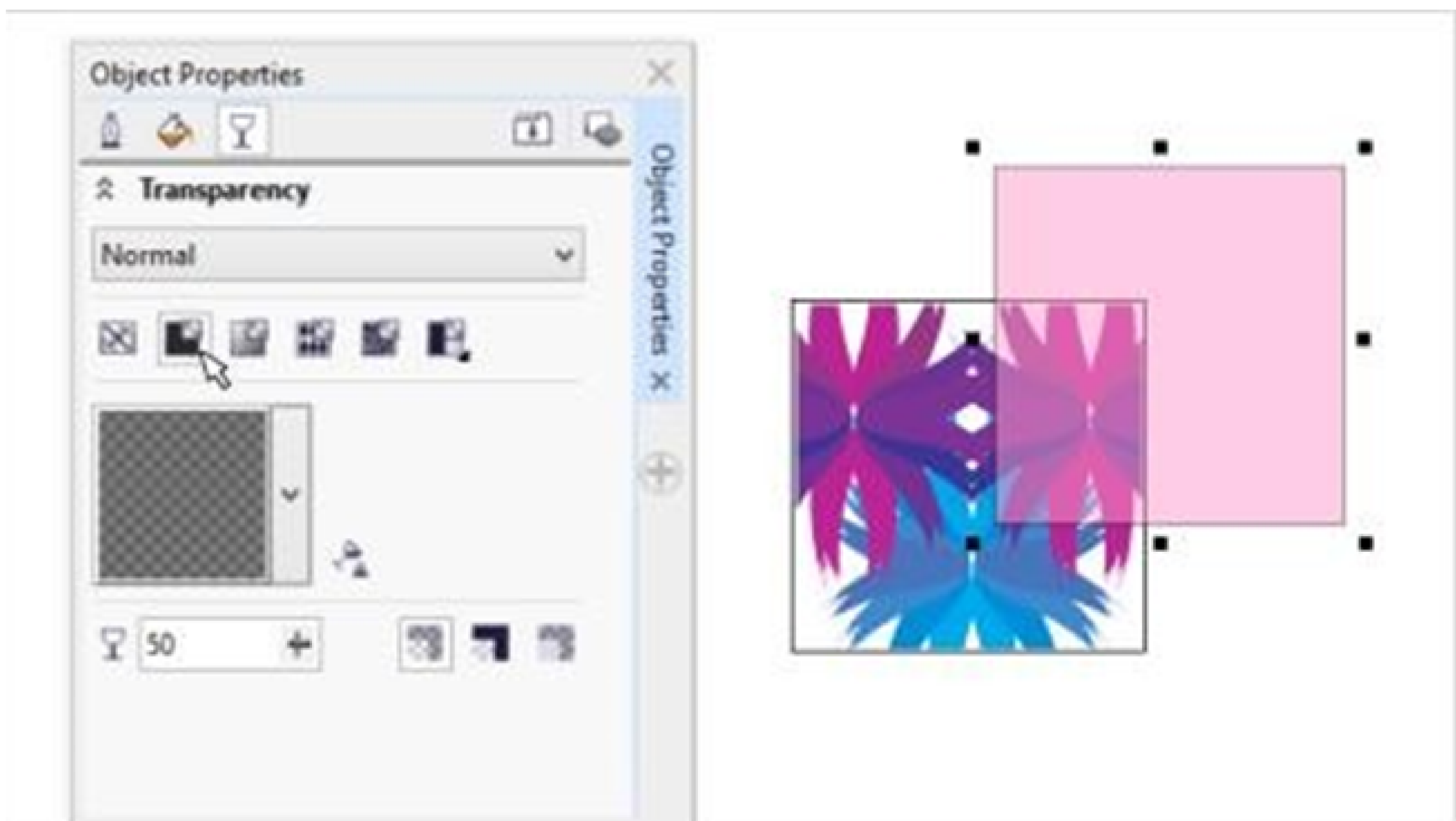


- **New! Fill creation**

In CorelDRAW X7, you can now instantly create new bitmap pattern and vector pattern fills from selected objects in your workspace. When you click the New from document button in the Object properties docker, the cursor changes to the Crop tool so that you can define an area of your workspace to use as a pattern.

- **Enhanced! Transparency**

Transparency settings have been added to the Object properties docker in CorelDRAW X7, making it faster and easier to apply and adjust object transparency. New options help you to quickly specify whether transparency is applied to an object's outline, fill, or both. Plus, you can instantly save transparency settings as a style to enable effortless reuse of your favorite effects.





- **New! OutlinePosition**

With CorelDRAW X7, the new Outline Position options help you create objects with more precise sizes. The Outsideoutline , Centeredoutline, and Inside outline buttons let you specify whether an outline is positioned inside the object, outside the object, or an equal combination of both. By positioning an outline inside an object, you can more easily create layouts with specific sizes because the outline will be rendered within the object's original measurements.

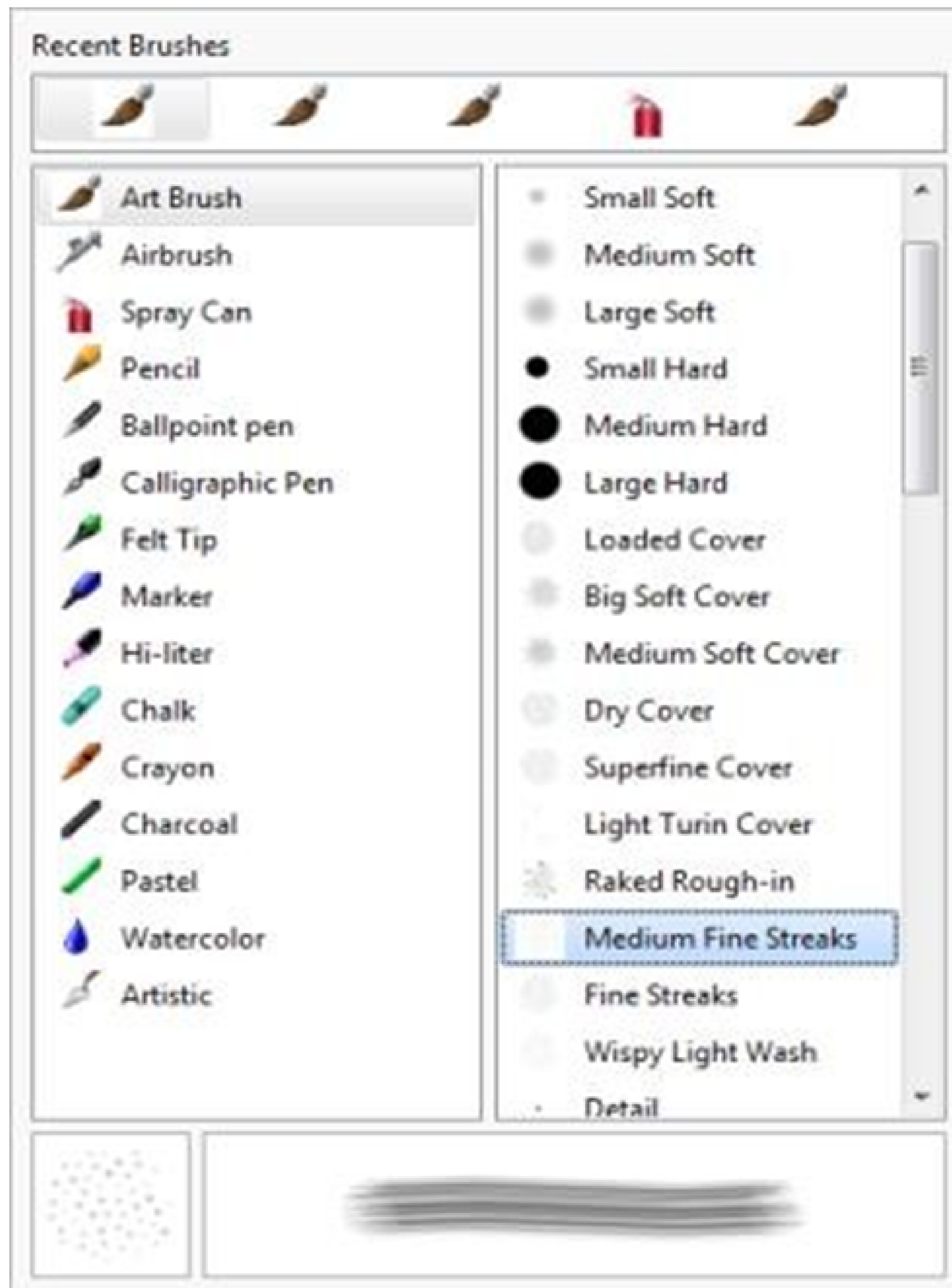
- **Enhanced! Object Properties docker**

With CorelDRAW X7, the redesigned Object properties docker has a new tab option that can help new users gain efficiency by reducing congestion. The Scroll/Tab mode button sets the docker to present only one group of formatting controls at a time, making it easier to focus on the task at hand.

- **New! Brush picker**

With Corel PHOTO-PAINT X7, the new Brush picker helps you find the brush you're seeking by combining all brush categories and brush types in one location. Available for the Paint, Effect, and Clone tools, the new Brush picker provides nib and brush stroke previews as you hover over each preset. It also stores the settings for the last five brushes you've used, which makes it easier to reuse a favorite combination.





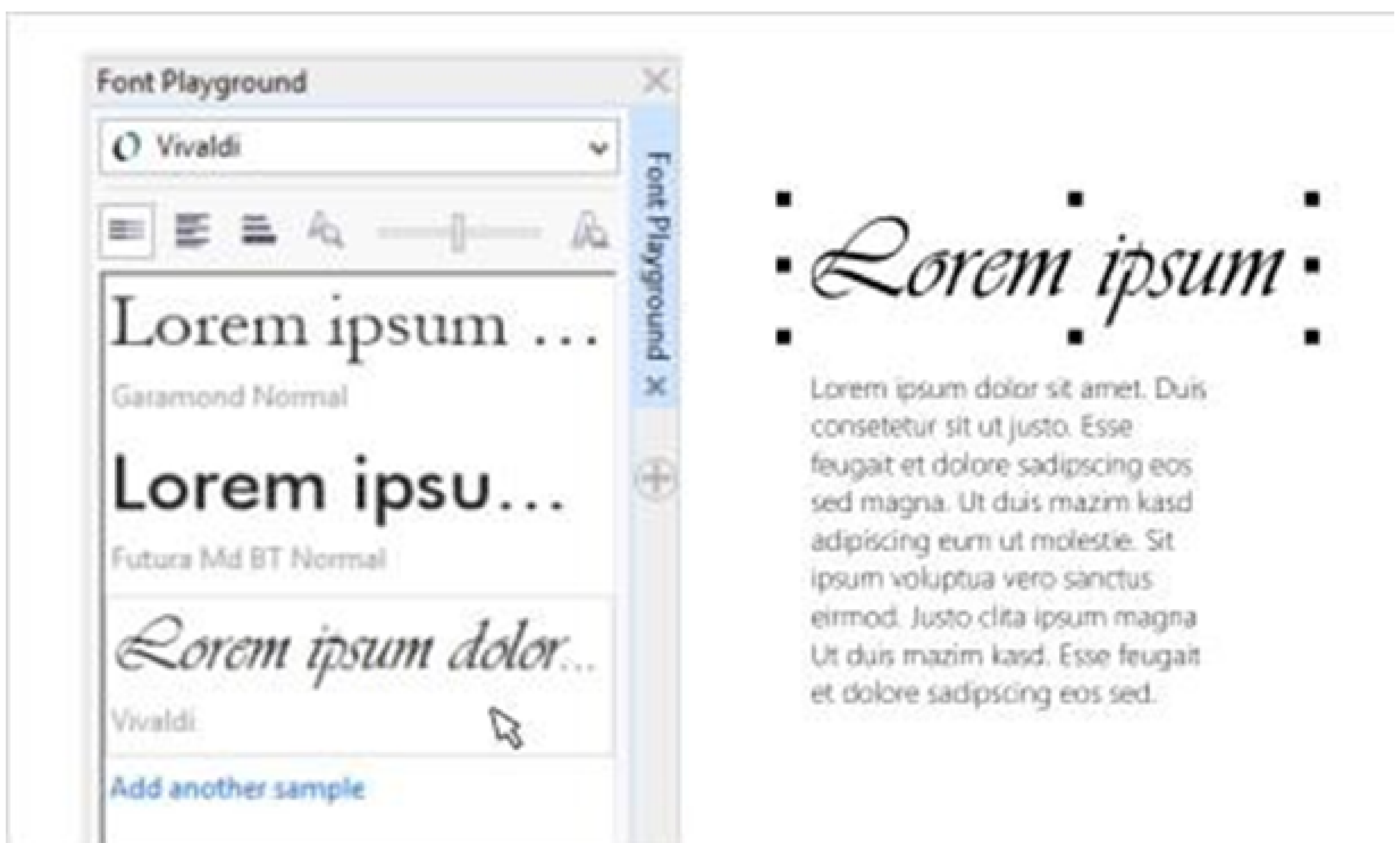
## • New! Microsoft Visual Studio Tools for Applications 2012

The inclusion of Microsoft Visual Studio Tools for Applications 2012 provides access to the latest development tools, making it easy for developers to create VSTA automations for all applications in the suite.

## • New! Font Playground

In CorelDRAW X7 and Corel PHOTO-PAINT X7, the new Font Playground docker introduces an easier way to browse, experiment with, and choose the perfect font. You can easily add sample text to view its appearance in different fonts, and a handy Zoom slider lets you quickly adjust the size of sample text. With a single click, you can also choose whether the sample text appears as a single line, multiple lines, or a cascading series of increased sizes.

The Font Playground also provides access to advanced features within OpenType fonts. If a text sample uses an OpenType font, you simply select the text to display the Interactive OpenType arrow and then choose which features to apply.



- **Enhanced! Special characters, symbols, and glyphs**

The revamped Insert character docker presents all characters, symbols, and glyphs associated with a selected font, making it easier than ever to find these items and then insert them into your documents. Available in both CorelDRAW X7 and Corel PHOTO-PAINT X7, the docker includes a filtering option that lets you display only the character subsets that you want. For example, you can choose to display only the Cyrillic characters and symbols for a selected font.

- **New! Object Styles previews**

A new pop-up now appears when you hover over a style in the Object styles docker, offering a quick preview of the style before it's applied.

### **New! Welcome Screen – content notification**

The redesigned Welcome Screen now provides update notifications directly in the navigation pane, so that you will be immediately informed of any available new content. This makes it easier to stay current with CorelDRAW Graphics Suite application updates, content, learning resources, and more.

You can now keep the Welcome Screen open as a docked tab in the workspace or as a separate floating window, providing constant access to its wealth of versatile resources.



- **New! Multipledocument interface**

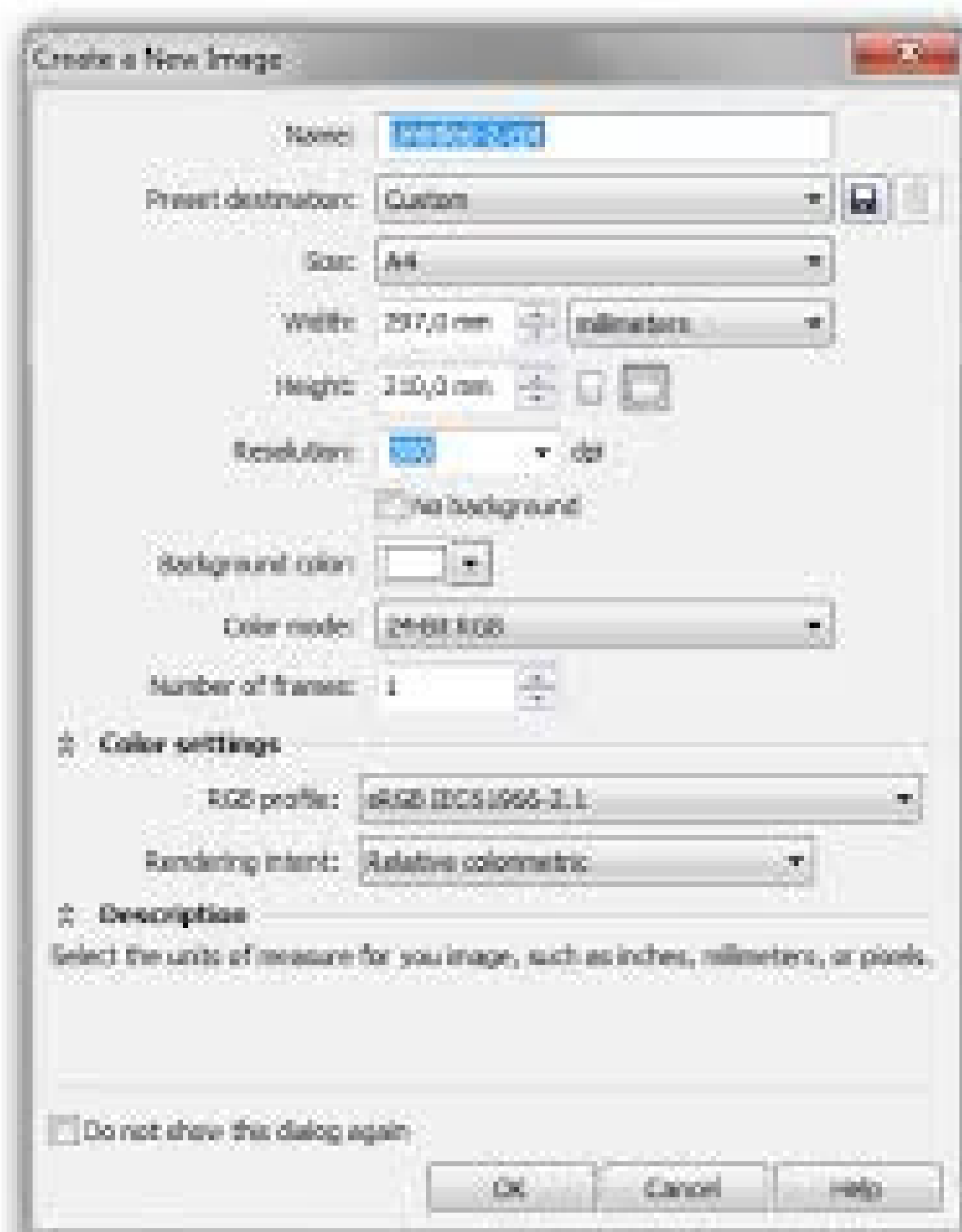
You can now work with multiple documents in a tabbed view, which helps you stay organized and quickly switch between several active documents.

- **New! Undocking documents**

When working with multiple documents, you can now drag a document outside of the application window to undock it, which is especially useful for dual-monitor workflows.

- **New! Support for high-resolution monitors**

The suite's applications have been optimized for high DPI resolutions, ensuring that user interface elements appear crisp and legible when displayed on high-resolution monitors.



- **Design with creativity and confidence**

New and enhanced features such as Liquid tools, special effects, alignment and dynamic guides, and QR codes help you design with creativity and confidence.

### **New! Liquid tools**

In Corel PHOTO-PAINT X7, four new, pressure-sensitive Liquid tools — Smear, Attract, Repel, and Twirl — offer fresh creative options for retouching photos. You can use these tools to reshape specific image areas to produce unique artistic effects.

Each tool responds to the pressure of your digital pen or stylus, and provides options that help you control the intensity of the effect.

With the Liquid smear tool, you can push pixels around an image area to produce distortion effects. You can set the size of the brush nib, specify the amount of the effect to apply, and choose between a rounded or pointy smear. The Liquid twirl tool produces twirl effects from image areas.

You can set the size of the brush nib, the speed of the twirl effect, and the direction of the twirl from the center of the brush. The Liquid attract and Liquid repel tools pull pixels toward or push pixels away from an image area. You can set the size of the brush nib and the speed at which the pixels move.



- **New! Align and Distribute docker**

The new Align and distribute docker provides quick and easy access to all available alignment options so that you can position objects with precision.

Docking the alignment options keeps the drawing window uncluttered, so you can instantly view the effects of any align and distribute modifications.

There are also new options that you can use to align and distribute objects from the edge of their outlines. Plus, you can align objects with a reference point by specifying its exact x and y coordinates



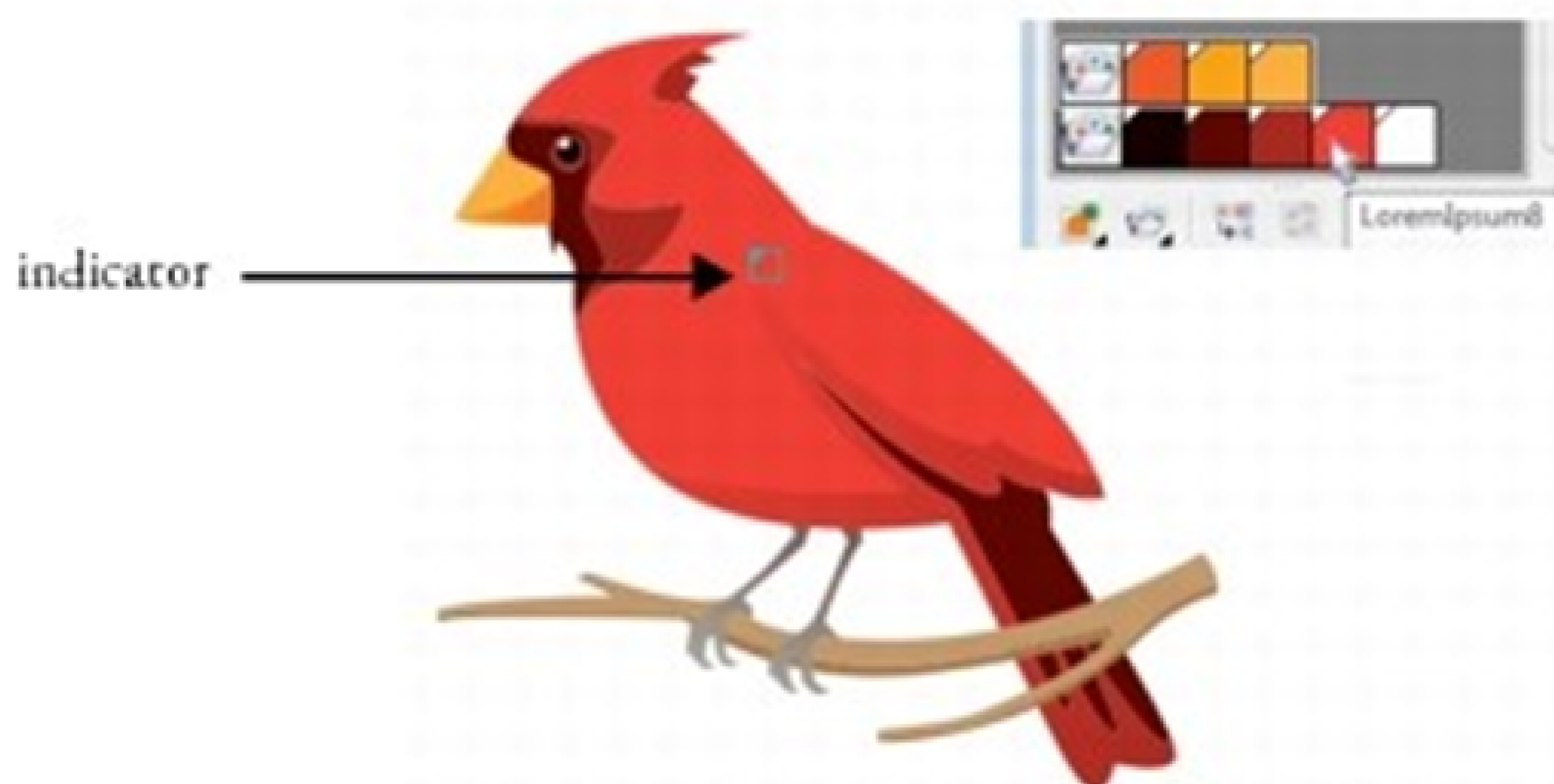
## • **New! Finding complementary colors**

With new harmony rules, you can snap all colors in a color harmony to a rule-based system, which lets you modify those colors while preserving the color harmony. You can also use harmony rules to create a new color harmony from scratch. There are six harmony rules that produce five-color harmonies based on a selected color swatch.

## • **Color Styles docker**

The enhanced Color styles docker makes it easier to view, arrange, and edit color styles and color harmonies. You can now specify the brightness value for a color, and constrain the Harmony Editor's selector ring which preserves saturation and hue while you adjust the color.

The Color styles docker now offers convenient view options, including Hint view which provides a visual indication of all document objects that use a specific color style, and Page sorter, which displays thumbnails of all pages in a document and previews changes as you adjust colors. You can also click View ☒ Page sorter to access thumbnails of all pages in a document, with live previews of changes you make to the document's color styles

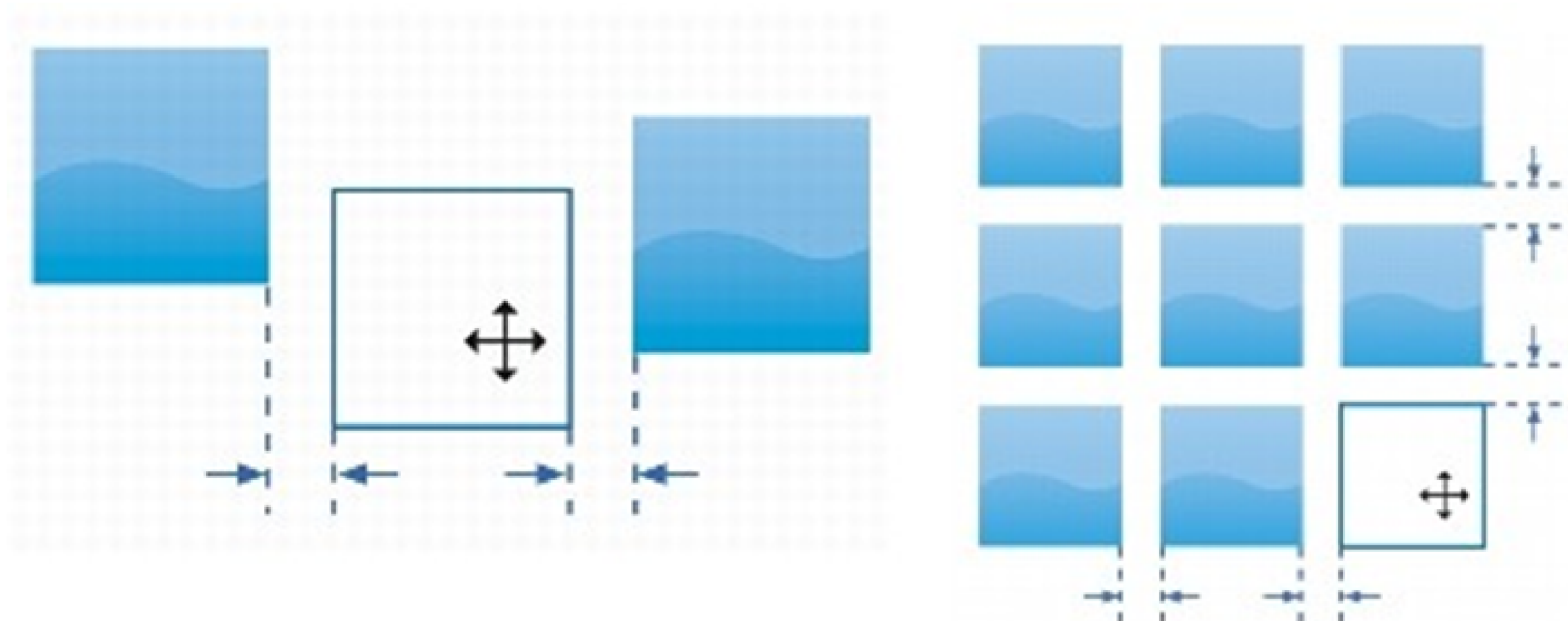


- **OpenType support for Asian text**

While working with Asian text, you can now use advanced OpenType typography features, such as widths, forms, vertical metrics, kana glyph alternatives, and verticalalternates and rotation

- **Alignment and Dynamic Guides docker**

You can use the new Alignment and Dynamic Guides docker to access and modify the configuration of these guides more quickly. With alignment guides, the new Intelligent Spacing guides make it easier to precisely position objects with the same spacing as nearby objects. Plus, the new Intelligent Dimensioning guides help you scale or rotate an object in relation to the dimensions or rotation angle of nearby objects.





- **Guidelines docker**

With the new Guidelines docker in both CorelDRAW X7 and Corel PHOTO-PAINT X7, it's never been easier to add, manage, and modify guidelines. You can position guidelines with precision by using x and y coordinates, alter the line style and color, set objects and editable areas to snap to guidelines, and lock guidelines to avoid accidental changes. Plus, you can set up angled guidelines and specify their angle of rotation.

- **Special effects**

Corel PHOTO-PAINT X7 introduces new camera effects, such as Bokeh blur, Colorize, Sepia Toning, and Time Machine to help you recreate historic photographic styles and give your images unique visual appearances.

With the Bokeh blur effect, you can define an area of focus and leave the rest of the image out of focus. You can create a duotone image by using the Colorize effect to replace all colors in an image with a single hue. The Sepia Toning effect simulates a photo taken with sepia film, which is similar to grayscale except with brown tones. And with the Time Machine, you can choose from seven historic photography styles ranging from 1839 to the 1960s.

